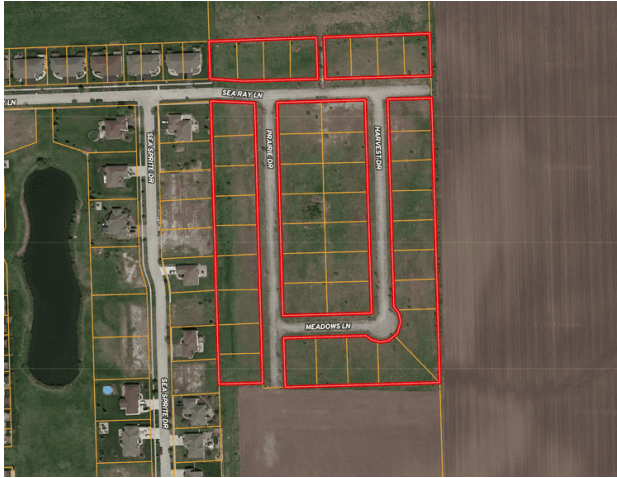


**43 Residential Lots: Wilmington, IL**

Property No.: 5574  
Auction No.: 19130



*Property Details*

<b>Property Type:</b>	<i>Residential</i>
<b>Seller Type:</b>	<i>Hedge Fund</i>
<b>Auction Type:</b>	<i>Reserve</i>
<b>Total Land Area:</b>	<i>11.676 ± Acres</i>
<b>Subdivision Name:</b>	<i>Prairie Farms</i>
<b>Lot Numbers:</b>	<i>See Lot List Below</i>
<b>Tax Identification Number:</b>	<i>See Lot List in Download Section</i>
<b>Address:</b>	<i>21308 Sea Ray Lane Wilmington, Illinois 60481</i>
<b>County:</b>	<i>Will</i>
<b>Lat/Lon:</b>	<i>41.32562, -88.122068</i>

*Agent Details*

<b>Listing Agent Information:</b>	<i>Seven Hills Auctions 800-742-9165 info@7hauctions.com</i>
<b>Buyer Agent Commission:</b>	<i>For Registered Buyer Agents, 2% of High Bid. Must Complete the Broker Registration Form</i>

## Closing Details

---

**Closing Agent:**

*Ed Janczur  
Old Republic National Title Insurance Company  
20 South Clark Street, Suite 2900, Chicago, IL 60603  
312-641-7799  
ejanczur@oldrepublictitle.com*

**Closing Date:**

*30 Days From Binding Agreement Date*

**Deed Type:**

*Special Warranty Deed*

**Buyer's Premium:**

## Description

---

**Selling in Association of Rick Levin and Associates.**

For additional details about this property, visit [7hauctions.com](http://7hauctions.com) or contact us at 800.742.9165

