

Single Family Residential: Cherry Log, GA

Property No.: 6070  
Auction No.: 250429-2



### Property Details

Property Type:	Residential
Seller Type:	Private Equity Group
Auction Type:	Reserve
Beds:	2
Baths:	1
Total Land Area:	0.37 ± Acres
Square Feet:	648
Year Built:	1995
Tax Identification Number:	0036027A3A
County:	Fannin
Address:	265 Wits End Way Cherry Log, Georgia 30522
Lat/Lon:	34.73948, -83.23123

## Agent Details

---

**Listing Agent Information:**

*Adrienne Nace  
ERA Sunrise Realty  
404-667-5722  
thefindersgroup@gmail.com*

**Buyer Agent Commission:**

*For Registered Buyer Agents, 2% of High Bid. Must Complete the Broker Registration Form*

## Closing Details

---

**Closing Agent:**

*William Phalen  
Sherman & Phalen  
1165 Northchase Parkway SE, Suite 450, Marietta, GA  
30067  
770-579-0109*

**Closing Date:**

*30 Days From Binding Agreement Date*

**Deed Type:**

*Limited Warranty Deed*

**Buyer's Premium:**

*10% Added to the High Bid Price*

## Description

---

**265 Wits End Way, Cherry Log, GA**

Experience the charm of mountain living with this enchanting furnished cottage in Cherry Log, GA for online auction. This property is move in ready and perfect opportunity for investors, vacation rental seekers, or someone searching for their second home getaway! Nestled in the serene foothills of the Appalachian Mountains, this cozy retreat offers an idyllic escape. Located near the Toccoa River, Aska Adventure Area, and an array of hiking and biking trails, this property is perfect for outdoor enthusiasts seeking adventure or relaxation in a tranquil setting.

This is an online auction; final price will be determined at the end of the auction. Please review our terms & conditions for information on the 10% Buyer's Premium, Extended Bidding, and more details.

**Interested in bidding?** Press the blue 'Login' button above to begin by creating a new account or signing in to an existing one.

**Have an agent?** Once a bidder account has been created, agents may fill out and submit a Broker Registration Form located in the downloads section of this page. This will connect agents & bidders in our system.

**Want to take a look?** To schedule a tour of this property please see the agent details above.

**Questions?** Contact us today! We are happy to assist you with any auctions you may have.

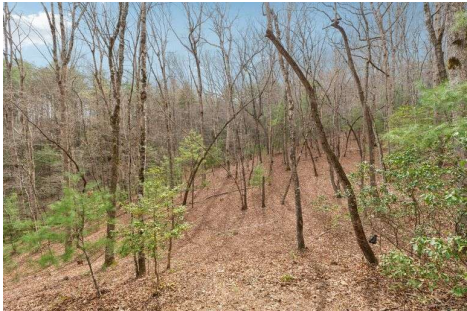
Call us at 800-742-9165 or send us a message at [info@7Hauctions.com](mailto:info@7Hauctions.com)

For additional details about this property, visit [7hauctions.com](https://7hauctions.com) or contact us at 800.742.9165









FLOOR 1



FLOOR 2

FLOOR PLAN CREATED BY CUDACORP AND PROFESSIONALLY CHECKED. DIMENSIONS ARE APPROXIMATE AND NOT GUARANTEED.