

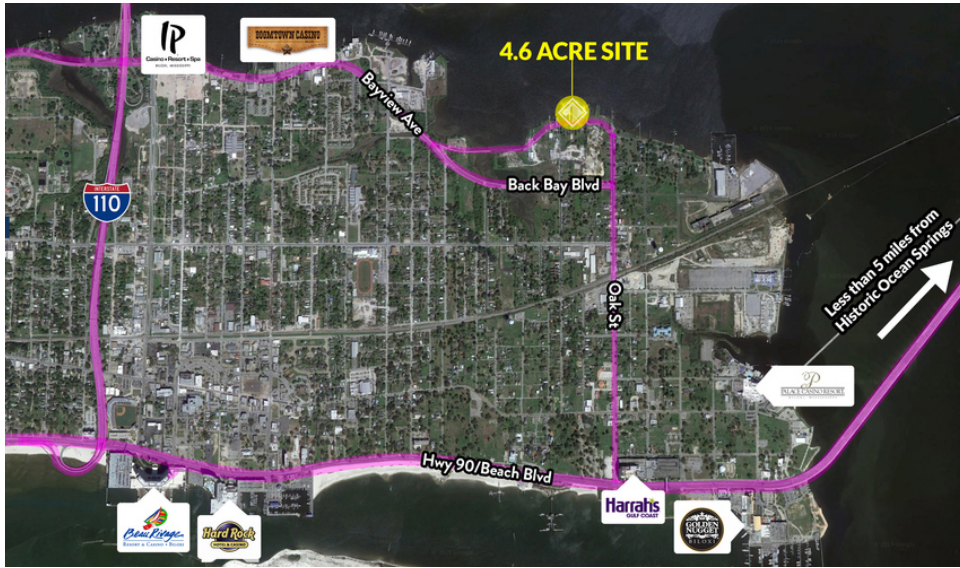


PRIME DEVELOPMENT SITE ON BILOXI BACK BAY

336 Bayview Ave, Biloxi, MS 39530

TIM CARLSON • PRINCIPAL
OFFICE: 228.276.2700
MOBILE: 228.547.0707
tcarlson@southeastcommercial.net

MONTE LUFFEY • PRINCIPAL
OFFICE: 228.276.2700
MOBILE: 228.547.1953
mluffey@southeastcommercial.net



PROPERTY DESCRIPTION

Southeast Commercial is pleased to offer, for sale, ~4.6 Acres of prime development land on Biloxi Back Bay. Property is Zoned WF (Waterfront), which allows uses, such as, Casino Gaming, Hotel, Restaurant, Marina, Multifamily, Mixed Use/Live Work Developments, and many others. Additional acreage may be available.

OFFERING SUMMARY

Sale Price:	\$2,410,000
Lot Size:	4.6 Acres

DEMOGRAPHICS

	3 MILES	5 MILES	10 MILES
Total Households	7,263	15,255	42,027
Total Population	19,895	43,173	115,102
Average HH Income	\$52,720	\$58,296	\$66,912

LAND FOR SALE

PROPERTY SUMMARY



SOUTHEAST
COMMERCIAL
REAL ESTATE



PRIME DEVELOPMENT SITE ON BILOXI BACK BAY

336 Bayview Ave, Biloxi, MS 39530

TIM CARLSON • PRINCIPAL

OFFICE: 228.276.2700

MOBILE: 228.547.0707

tcarlson@southeastcommercial.net

MONTE LUFFEY • PRINCIPAL

OFFICE: 228.276.2700

MOBILE: 228.547.1953

mluffey@southeastcommercial.net



LAND FOR SALE

AERIAL MAP



SOUTHEAST
COMMERCIAL
REAL ESTATE





PRIME DEVELOPMENT SITE ON BILOXI BACK BAY

336 Bayview Ave, Biloxi, MS 39530

TIM CARLSON • PRINCIPAL

OFFICE: 228.276.2700

MOBILE: 228.547.0707

tcarlson@southeastcommercial.net

MONTE LUFFEY • PRINCIPAL

OFFICE: 228.276.2700

MOBILE: 228.547.1953

mluffey@southeastcommercial.net



LAND FOR SALE

DIMENSIONED AERIAL



**SOUTHEAST
COMMERCIAL**
REAL ESTATE

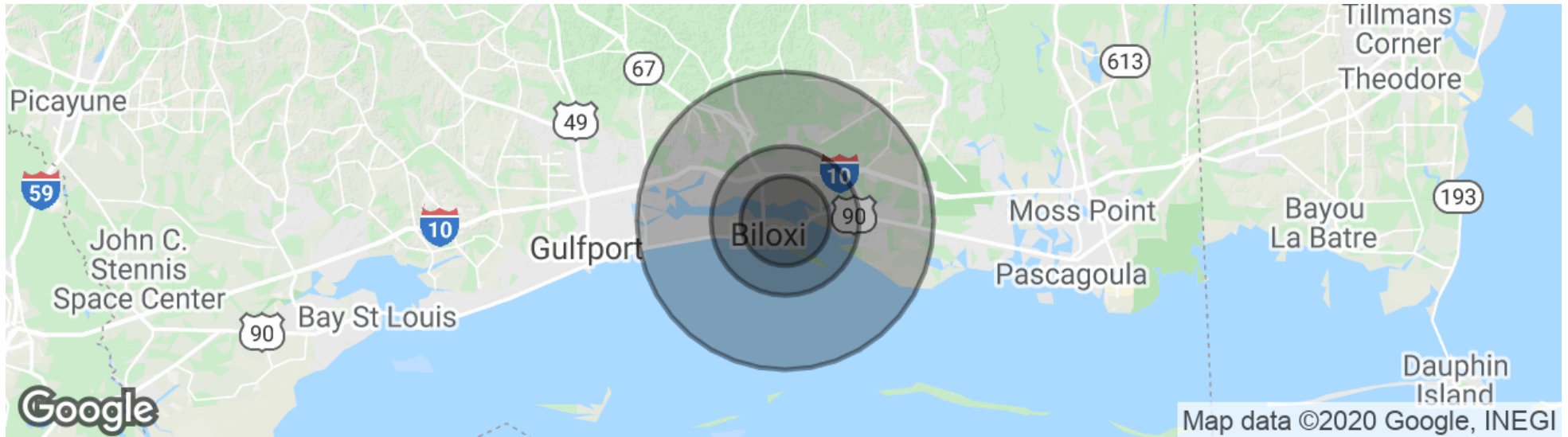


PRIME DEVELOPMENT SITE ON BILOXI BACK BAY

336 Bayview Ave, Biloxi, MS 39530

TIM CARLSON • PRINCIPAL
OFFICE: 228.276.2700
MOBILE: 228.547.0707
tcarlson@southeastcommercial.net

MONTE LUFFEY • PRINCIPAL
OFFICE: 228.276.2700
MOBILE: 228.547.1953
mluffey@southeastcommercial.net



POPULATION

	3 MILES	5 MILES	10 MILES
Total population	19,895	43,173	115,102
Median age	36.7	36.1	36.9
Median age (Male)	35.7	34.7	35.9
Median age (Female)	38.3	37.5	37.9

HOUSEHOLDS & INCOME

	3 MILES	5 MILES	10 MILES
Total households	7,263	15,255	42,027
# of persons per HH	2.7	2.8	2.7
Average HH income	\$52,720	\$58,296	\$66,912
Average house value	\$141,360	\$141,261	\$186,721

* Demographic data derived from 2010 US Census

LAND FOR SALE

DEMOGRAPHICS MAP & REPORT



**SOUTHEAST
COMMERCIAL**
REAL ESTATE