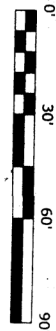


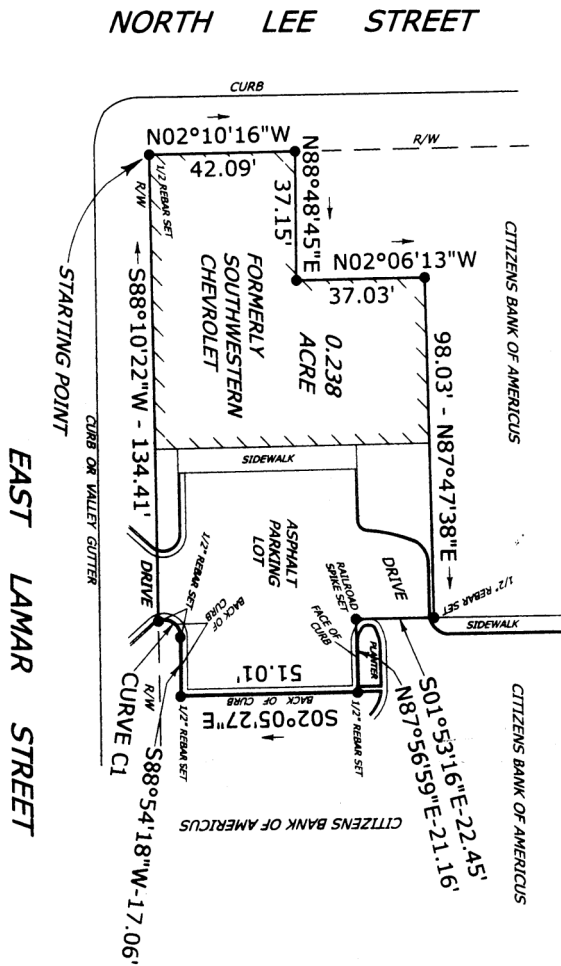
JAMES R. LITTLEFIELD
115 COTTON AVENUE
AMERICUS, GA 31709
229-924-4204

ERROR OF CLOSURE = 1/16.263, BALANCED BY COMPASS RULE. ANGLE ERROR = 10"
PER ANGLE POINT. ANGLES AND DISTANCES MEASURED BY TOPCON GTS-303 TOTAL
STATION. THIS PLAT HAS BEEN CALCULATED FOR CLOSURE, +1,50,000. I CERTIFY
THAT THIS PLAT REPRESENTS THE SURVEY MADE AND HAS BEEN PREPARED IN
CONFORMITY WITH MINIMUM STANDARDS AND REQUIREMENTS OF LAW.

SURVEY
FOR
CITIZENS BANK OF AMERICUS
108 EAST LAMAR STREET
0.238 ACRE IN LAND LOT 156
27th LAND DISTRICT
AMERICUS, GEORGIA
SURVEYED AUGUST 3, 2006
PLATTED AUGUST 7, 2006
SCALE: 1" = 30 FEET



CURVE C1
CURVE RADIUS = 4.65'
ARC LENGTH = 9.18'
CHORD = 535°17'03"W-7.76'



#107 Plat Book C Slide 47-f 9-6-06 4:15pm